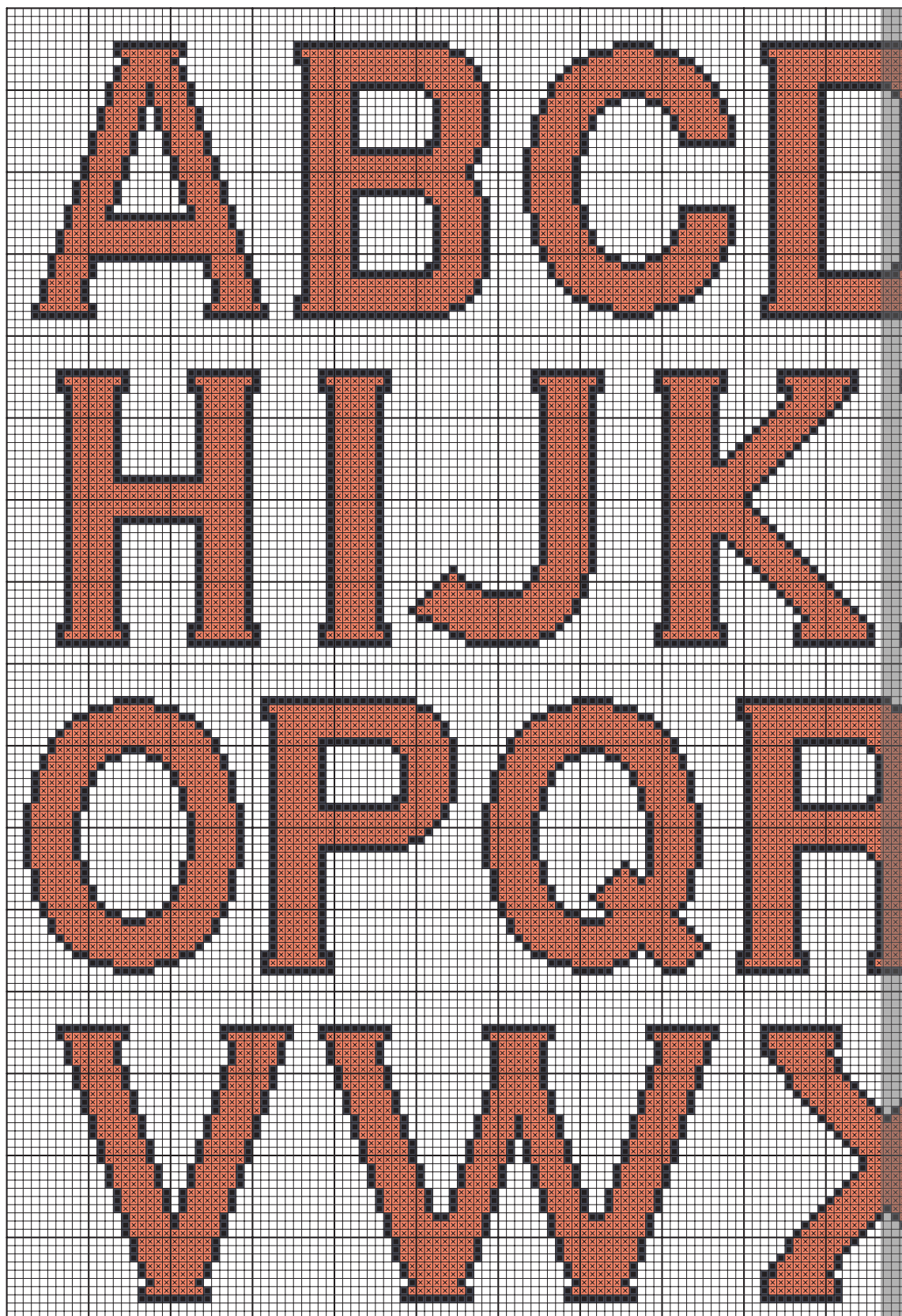


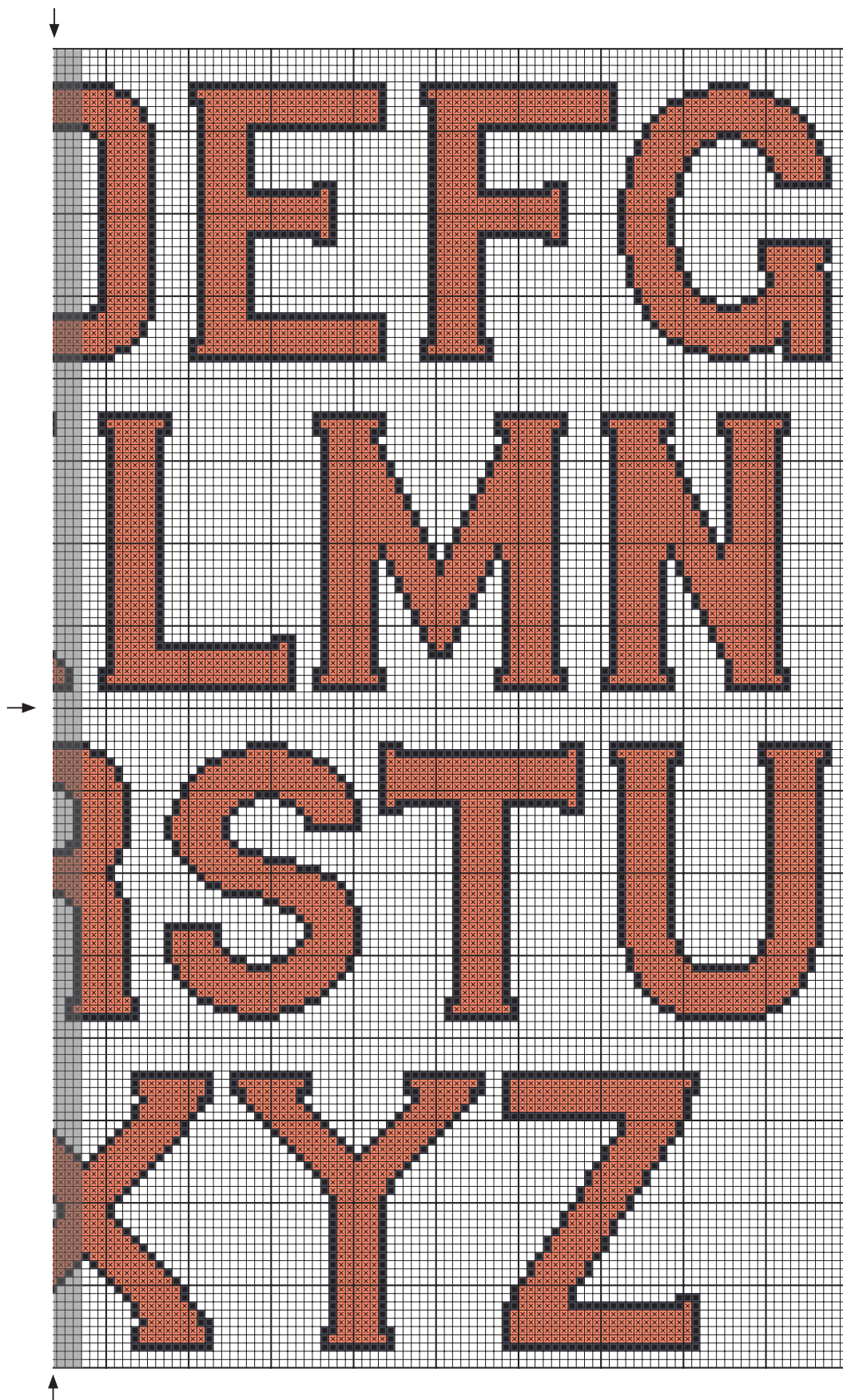
# Capital Alphabet / Alphabet majuscule

Coloured Cross Stitch Chart with Backstitch



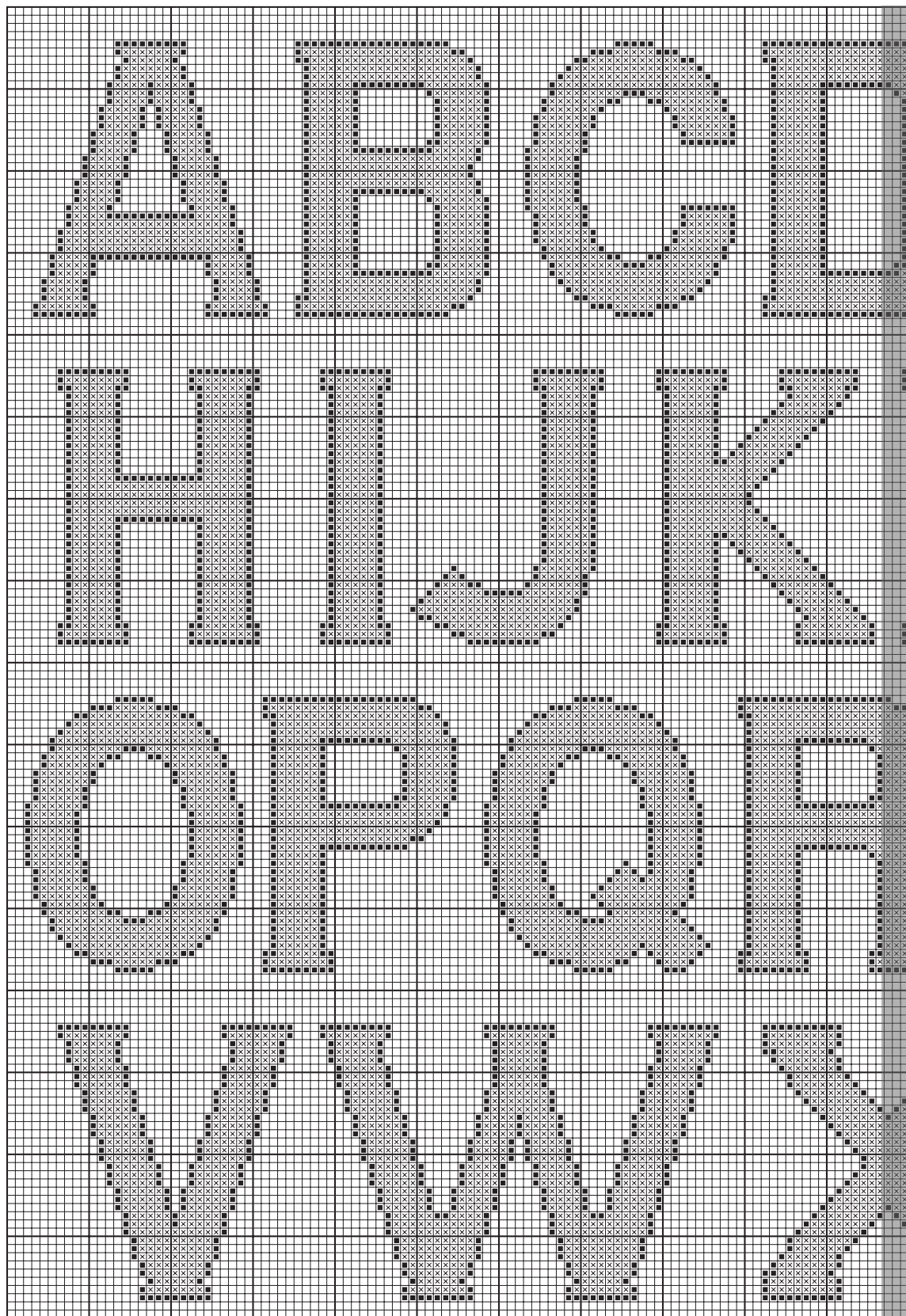
# Capital Alphabet / Alphabet majuscule

Coloured Cross Stitch Chart with Backstitch



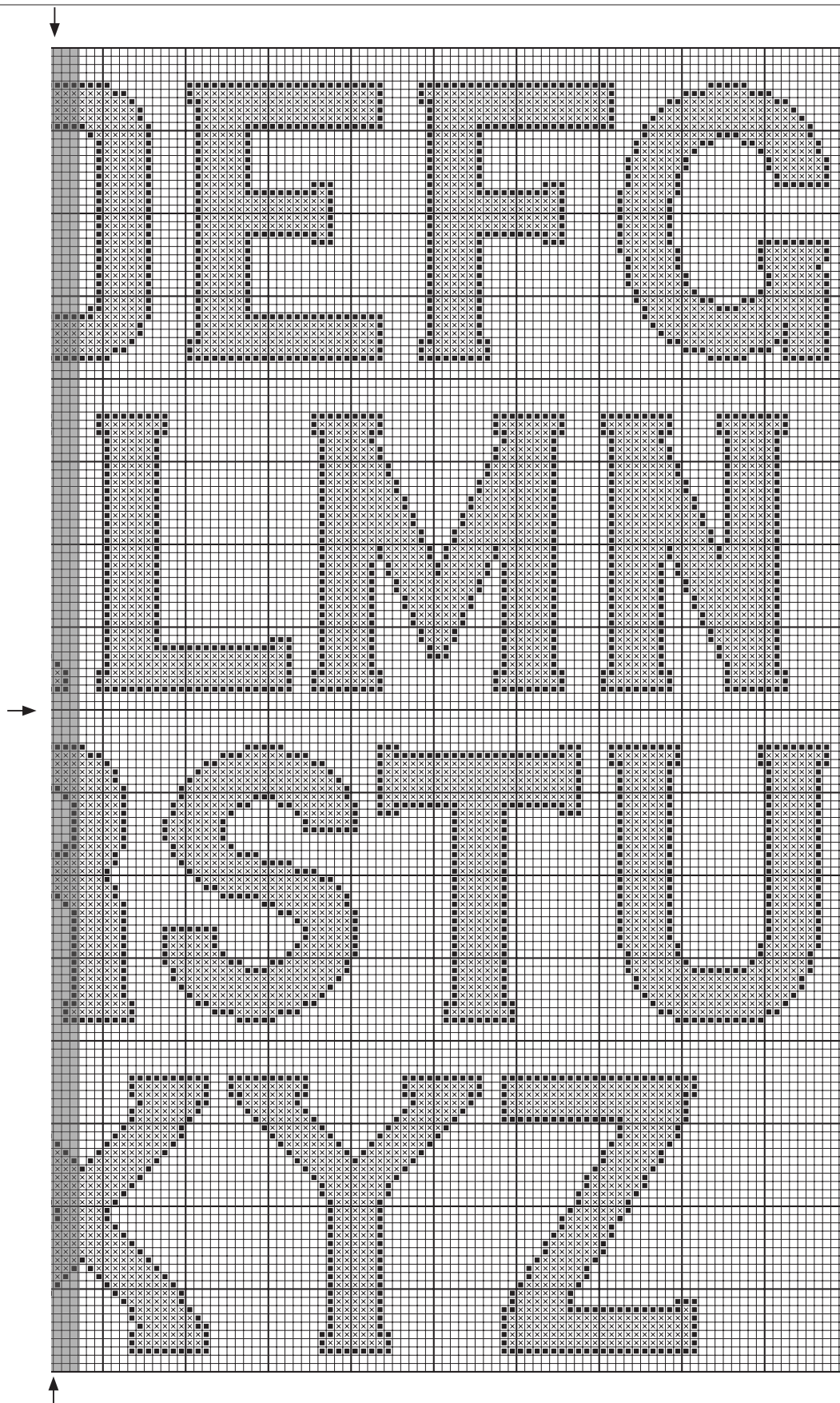
# Capital Alphabet / Alphabet majuscule

## Cross Stitch Chart



# Capital Alphabet / Alphabet majuscule

## Cross Stitch Chart



# Capital Alphabet / Alphabet majuscule

## Getting Started



### Tool Kit

DMC Mouliné Special embroidery thread 117MC  
Cross stitch fabric / aida  
Cross stitch needle  
Embroidery hoop (optional)  
Scissors

Design size 29 x 36,5 cm / 11,4 x 14,4 ”

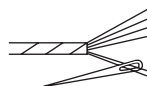
The size of your design depends on the cross stitch fabric you choose. The higher the fabric's "count" (ie number of cross stitches per inch), the smaller the stitches and therefore your design. We recommend beginners start with 14 count aida (the most common cross stitch fabric), which is what we have based our design size on.

### Stitches and Colours You'll Use

#### Cross Stitch





Use 2 strands



#### Mouliné Special Embroidery Thread

Symbol	Colour	N° skeins*
--------	--------	------------

	3341	x 5
---	------	-----

	823	x 3
---	-----	-----

\* Based on stitching with the number of strands shown above, onto 14 count aida.